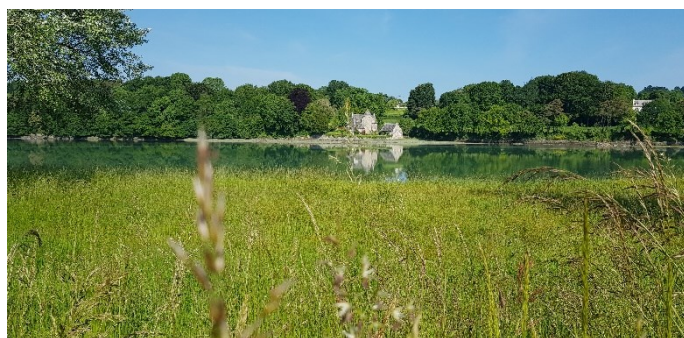
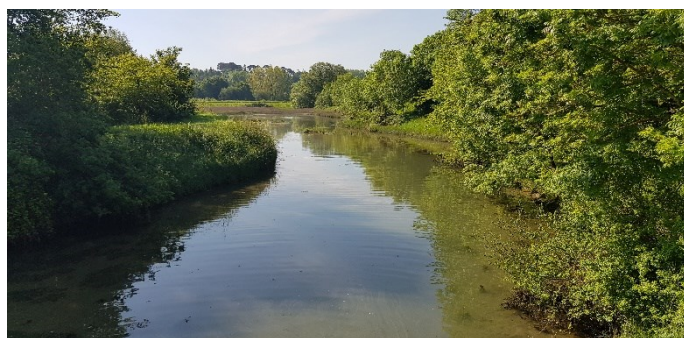
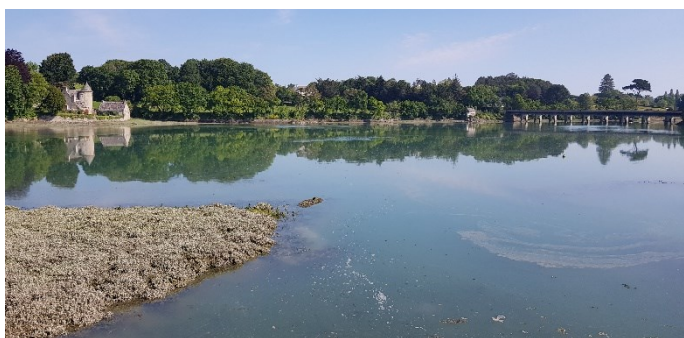




*Embouchure du Douron entre Locquirec et Plestin les Grèves en face du Manoir de l'île Blanche*

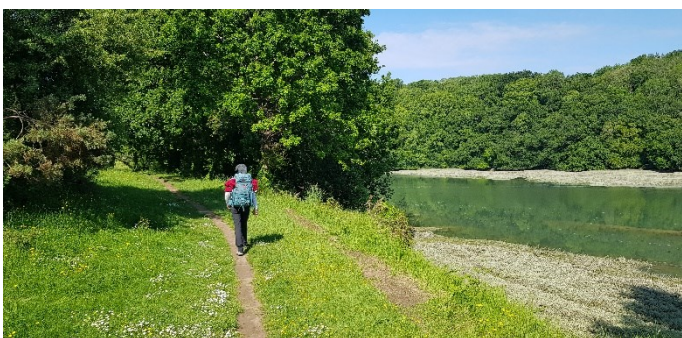


*Manoir de la Tour d'argent*



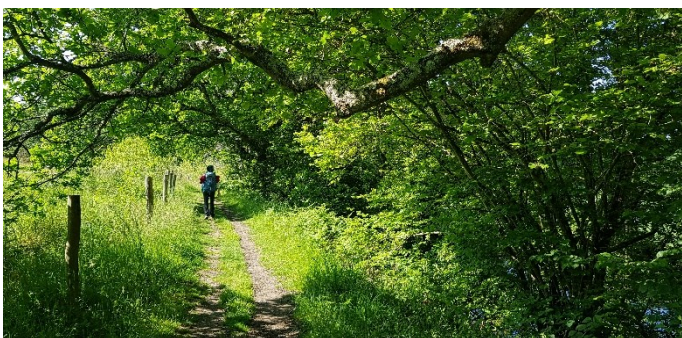
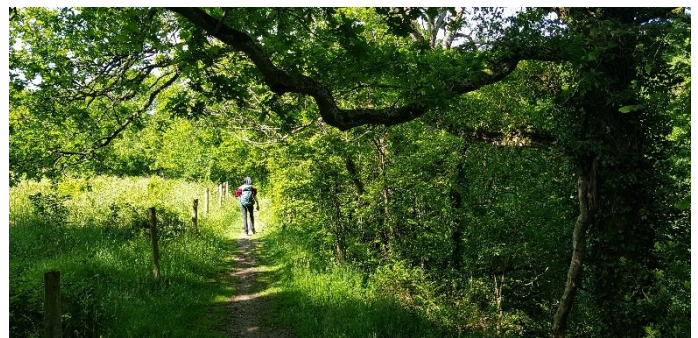


*Estuaire du Douron*



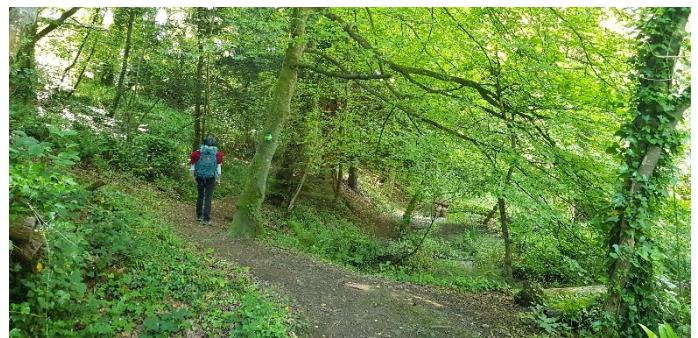
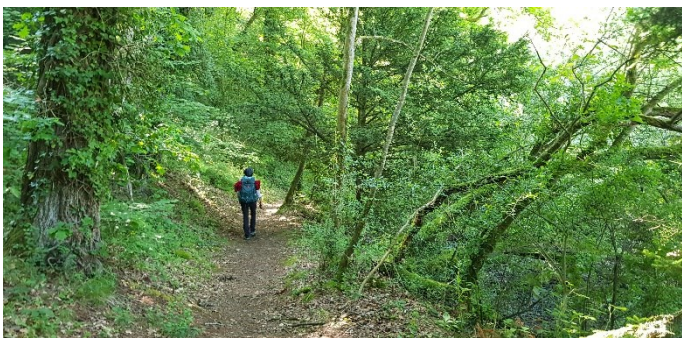


*Cairn du Col de Saint-Haran (24m !)*



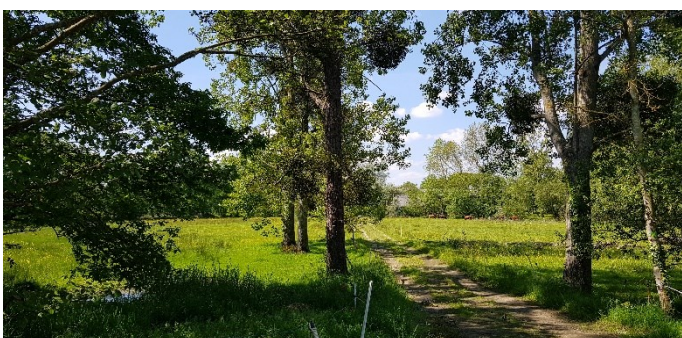


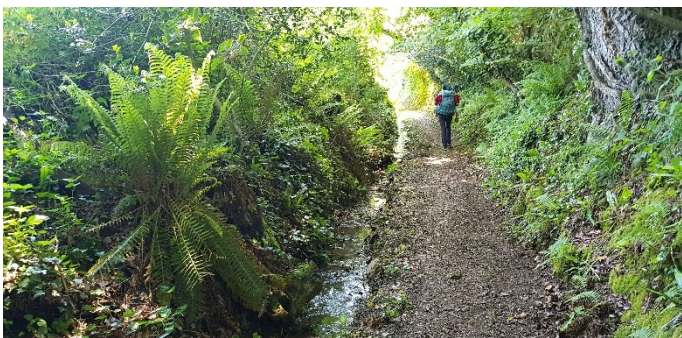
*Lavoir de Saint-Haran*



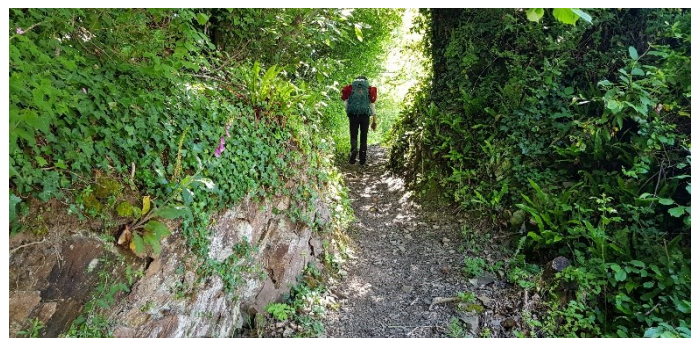


*En suivant le Douron en aval de Pont-Menou*



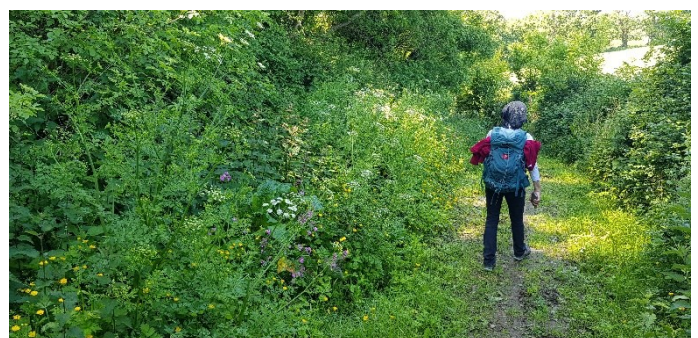
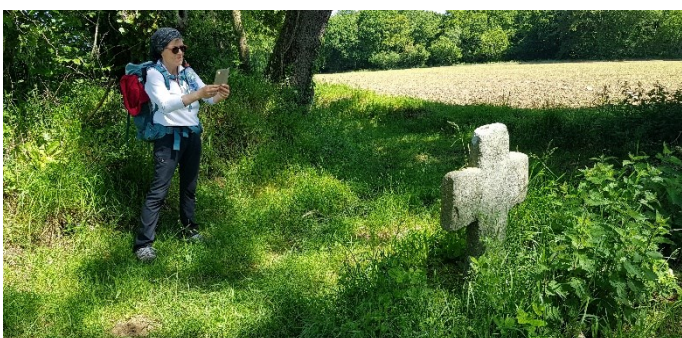


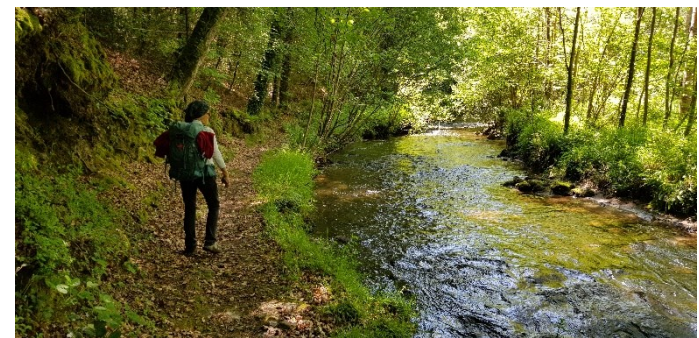
*En suivant le Douron en amont de Pont-Menou*



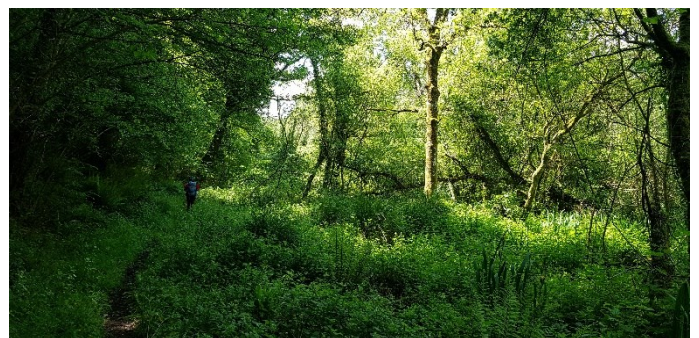
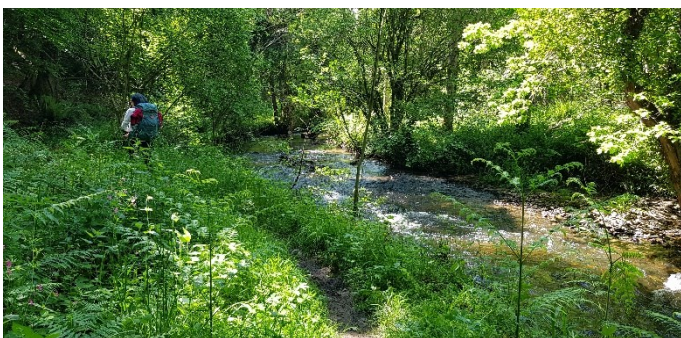
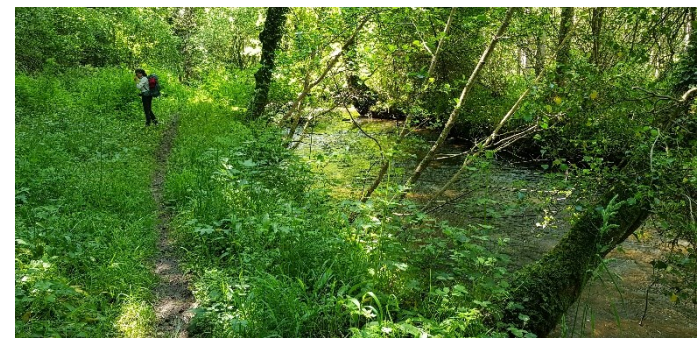
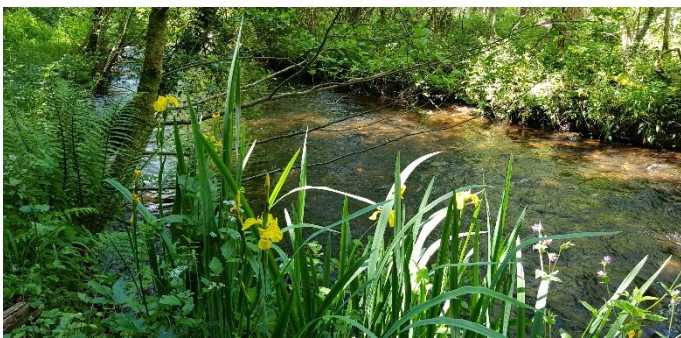


*Chapelle de Saint-Jagut*

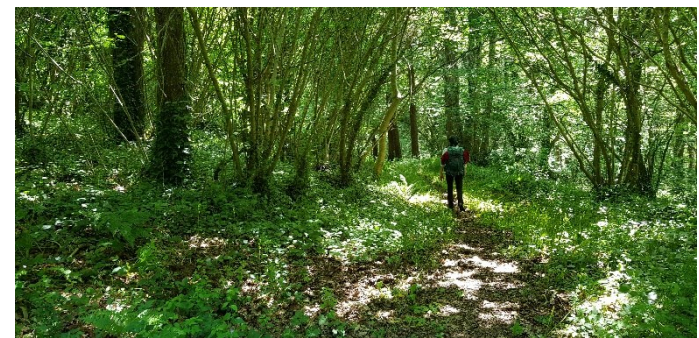




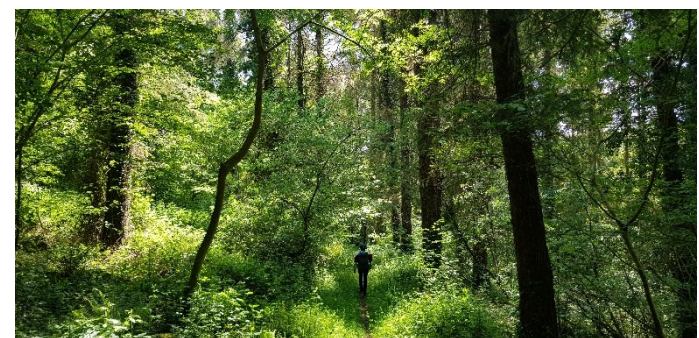
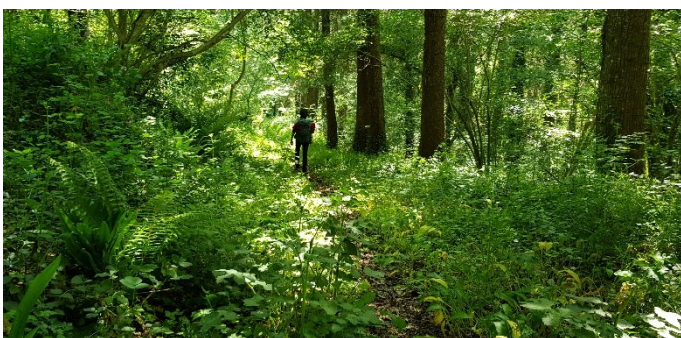
*En remontant la rivière du Douron*





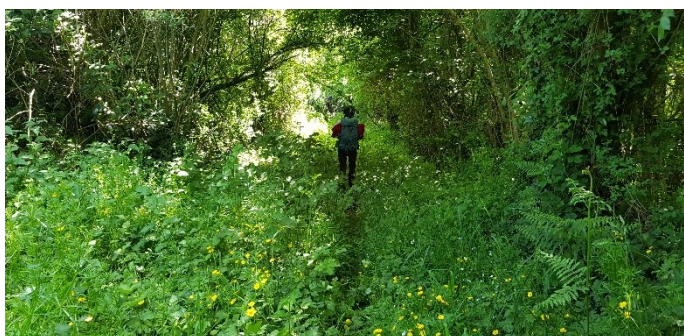


*Vallée boisée du Douron en aval de Convenant*



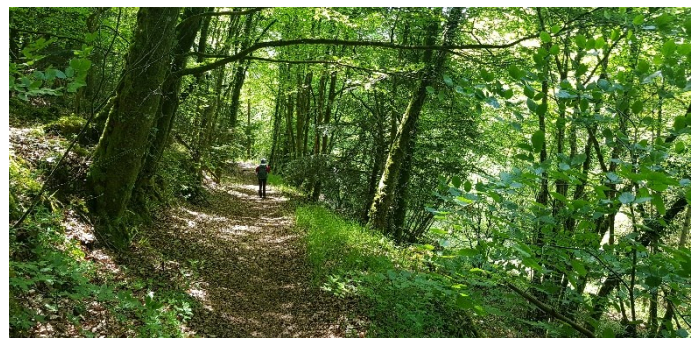


*Fermes de Conevant*

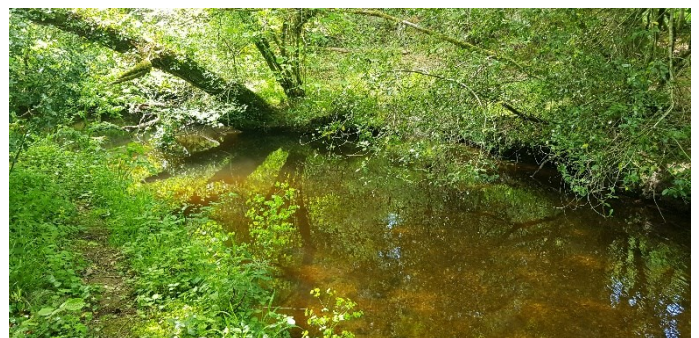
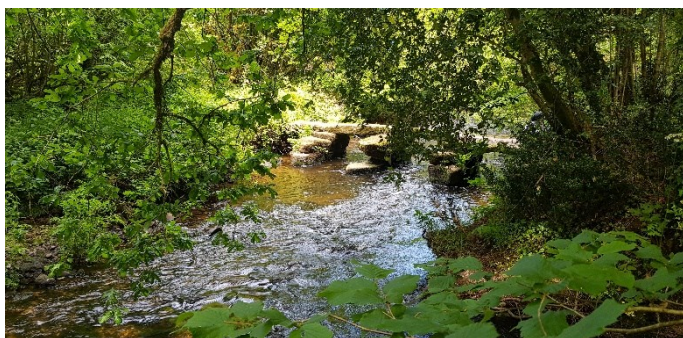


*Ferme de Kermerzit (dans les ruines du château)*





*Pont de Kerporz*





*Le Ponthou (sur le Douron à la limite des communes de Plouigneau et Plouégat-Moysan)*

