

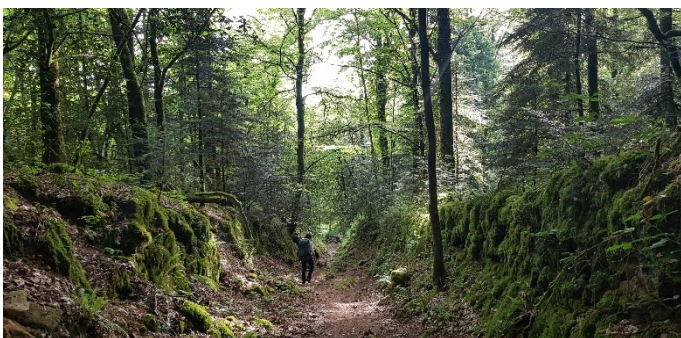


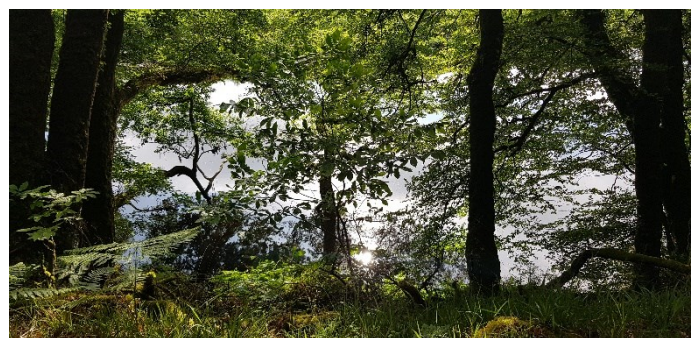
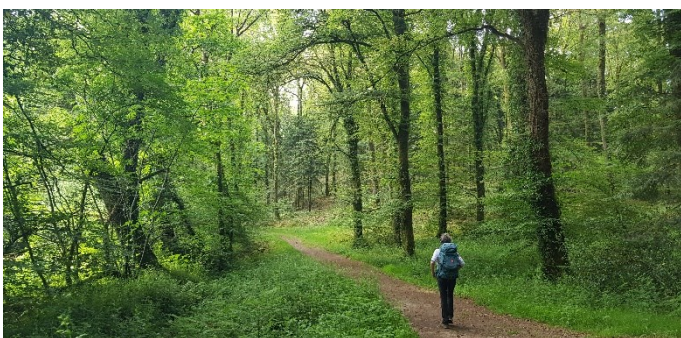
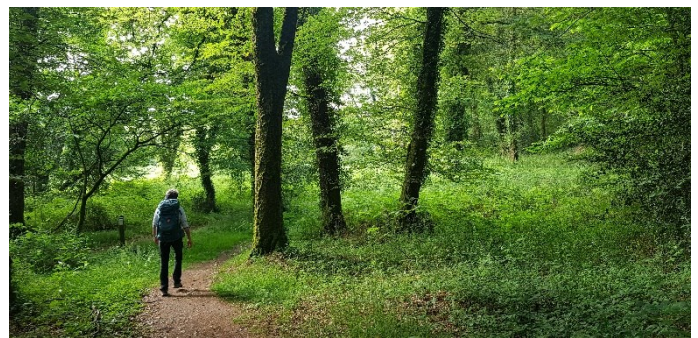
*Couvent des Ursulines en aval de Quimperlé*





*Forêt domaniale de Carnoët*



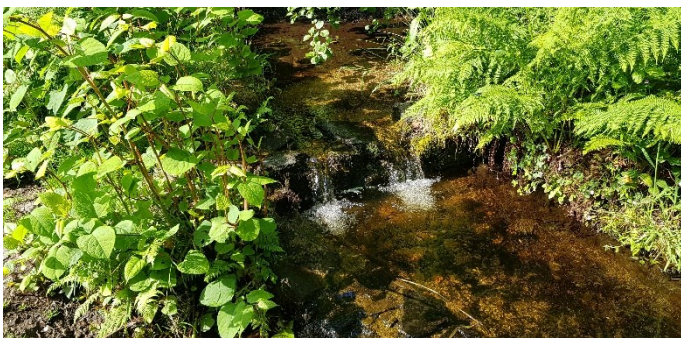


*Bords de la Laita*

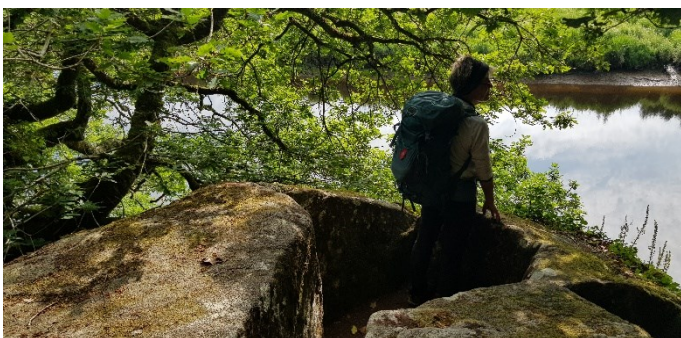


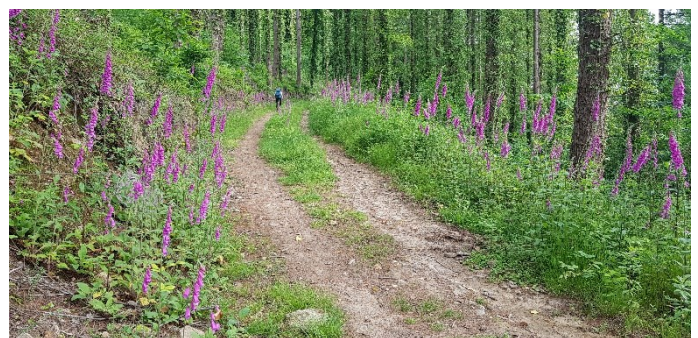


*Le Rocher Royal*



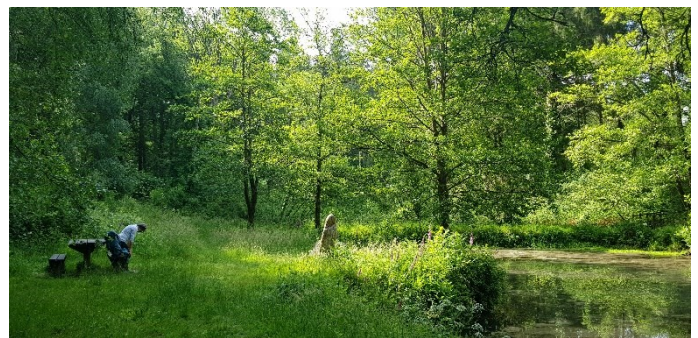
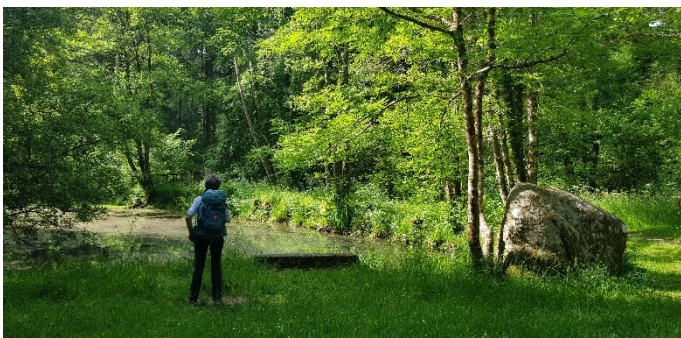
*La Chaire de l'Evêque*



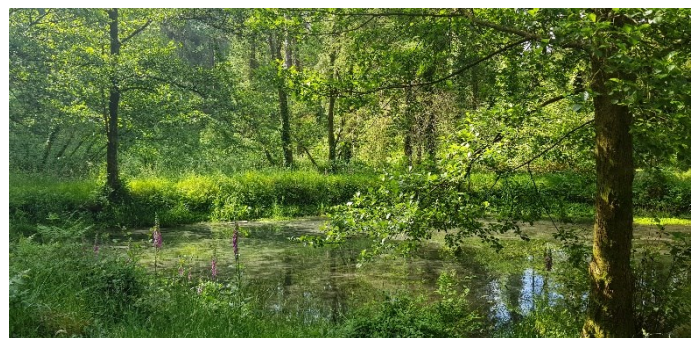
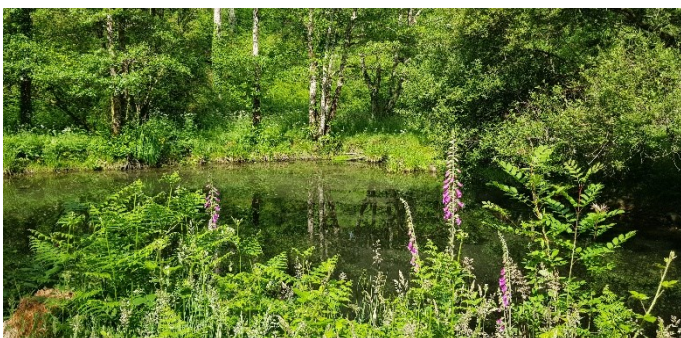


*Montée dans les digitales*



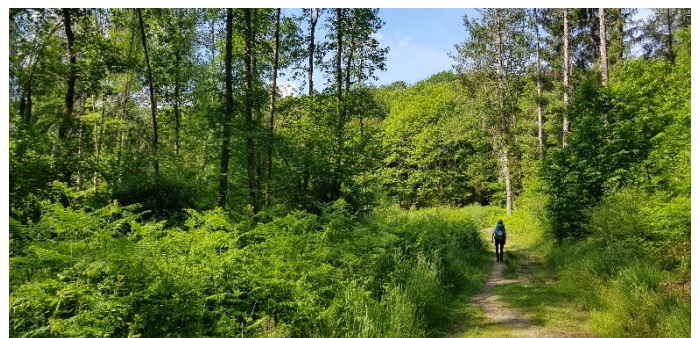
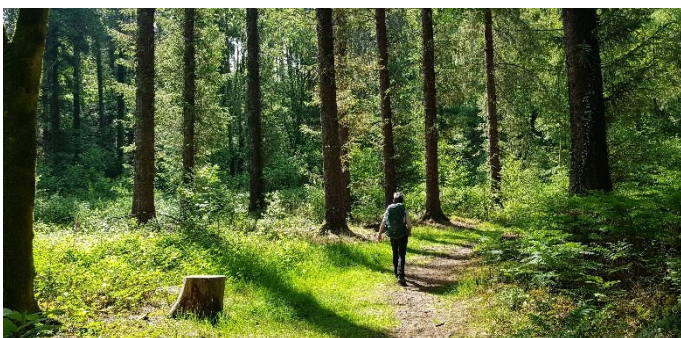
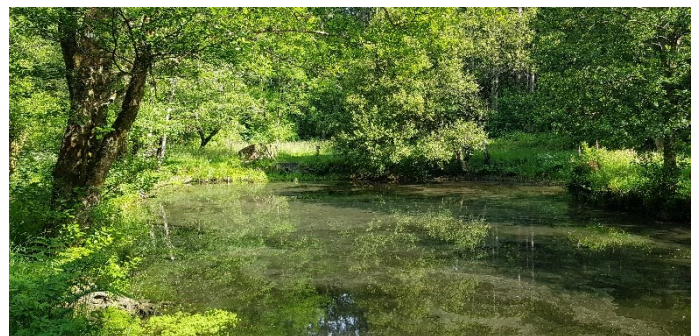
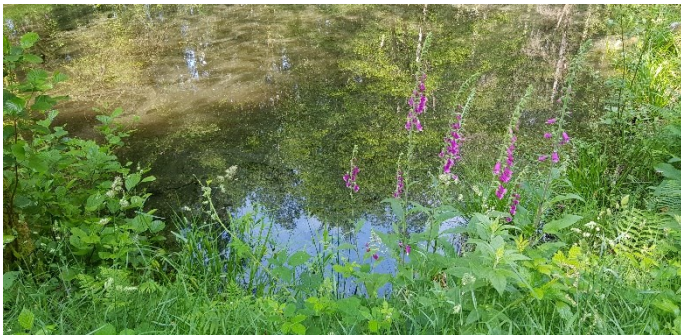


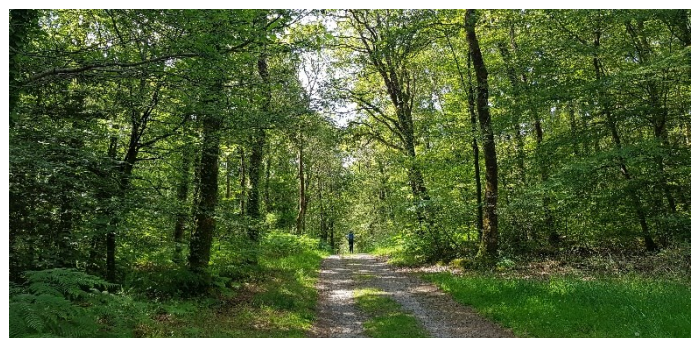
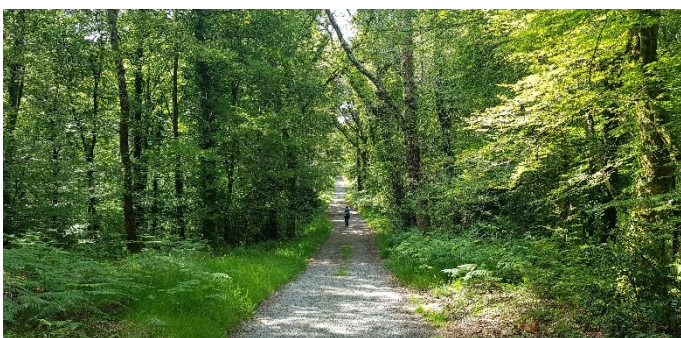
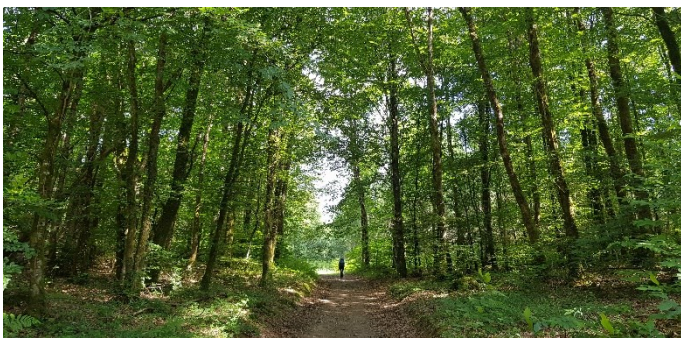
*Etang des Tanneurs*



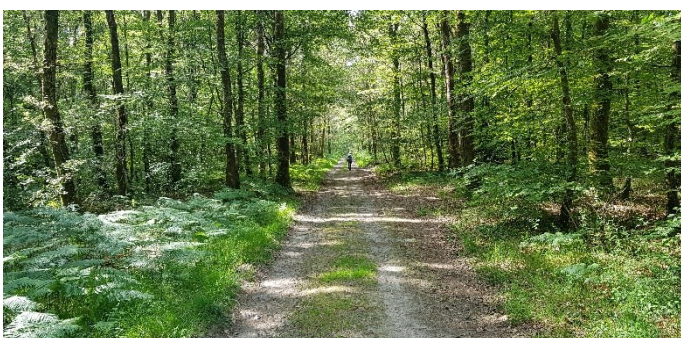


*Etang des Tanneurs*





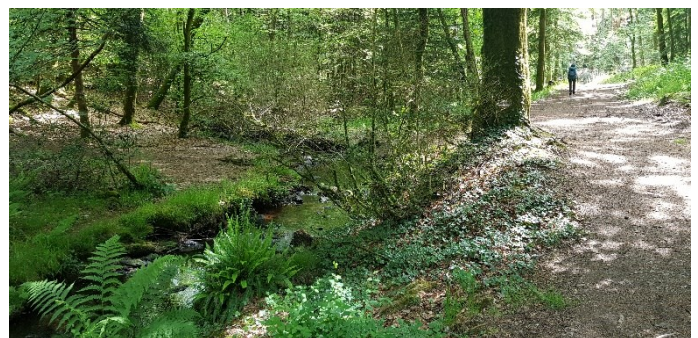
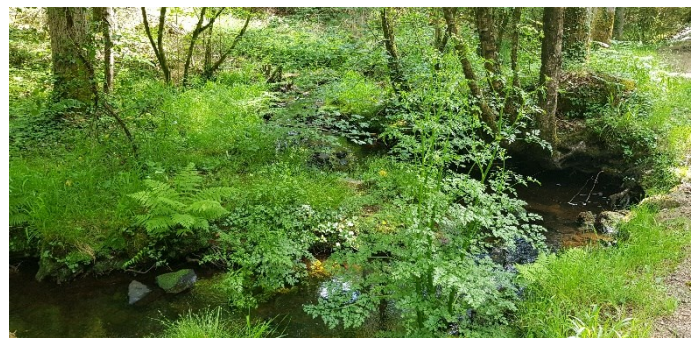
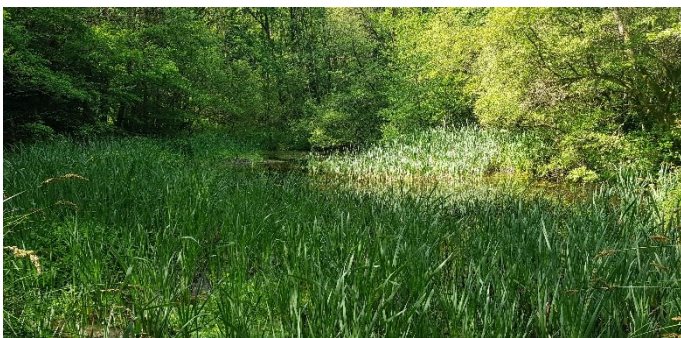
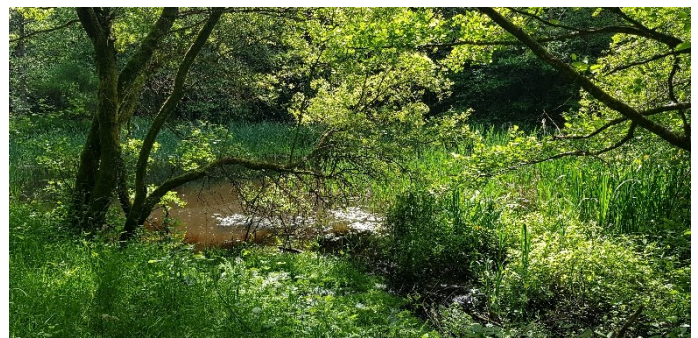
*Forêt Domaniale de Carnoët*





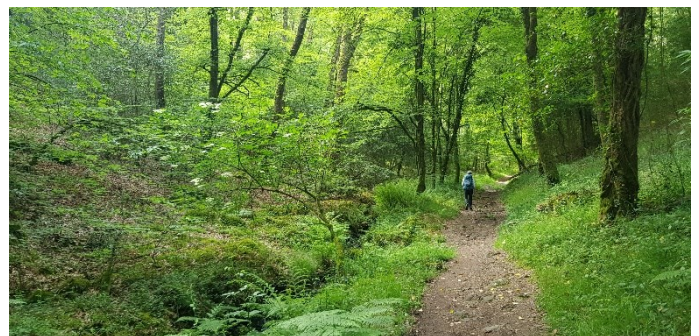


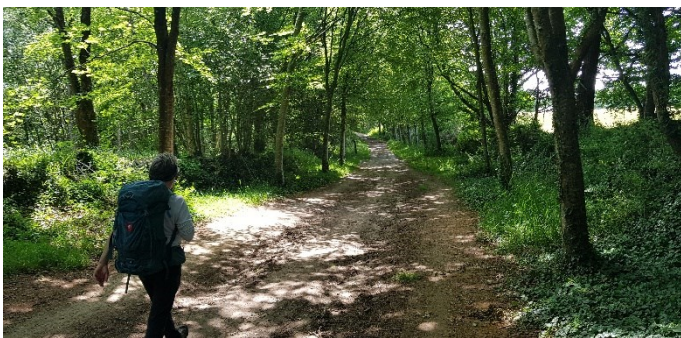
*Stèle de Kerguéguen*





*Le Pont de Pierre*





*Anse de l'Abbaye Saint Maurice*





*Anse de l'Abbaye Saint Maurice*



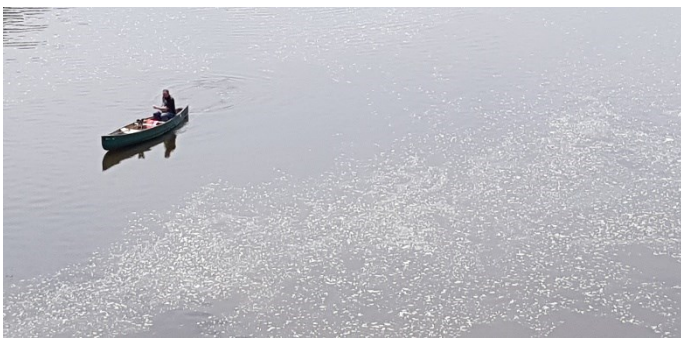


*Estuaire de la Laïta en aval de l'Abbaye Saint-Maurice*





*Pont Saint Maurice – Liaison avec le sentier littoral*





*Embouchure de la Laïta entre Guidel-Plages et le Pouldu*

